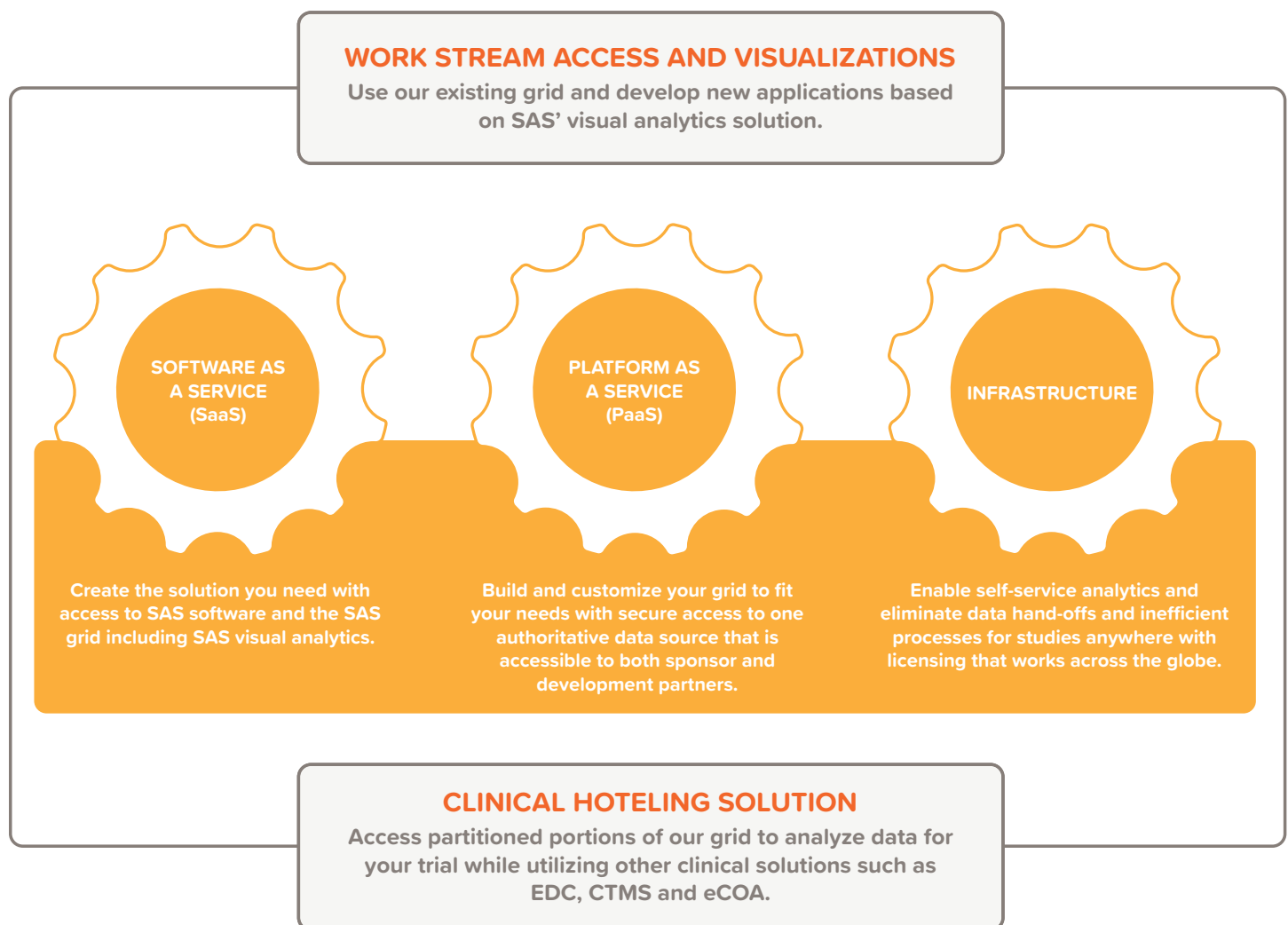


When you need a collaborative platform and solutions at your fingertips, Chiltern's Cloud Analytics Passport — powered by SAS® — provides a scalable, collaborative cloud platform **Designed Around You®**.

Chiltern's Cloud Analytics Passport — powered by SAS — is a clinical reporting and biostatistics environment that enables you to leverage Chiltern's established data solutions and infrastructure while providing a gateway to additional SAS products. Save money on IT costs and gain access to more advanced analytical tools and Chiltern's expertise in data analysis, while you get up and running faster with space on the SAS grid environment.

### **CLOUD ANALYTICS PASSPORT – POWERED BY SAS**

Our Cloud Analytics Passport offers you flexible options designed around your trial. Chiltern and SAS can cooperatively develop a new analytics consumption model that will break down silos and create new revenue streams.



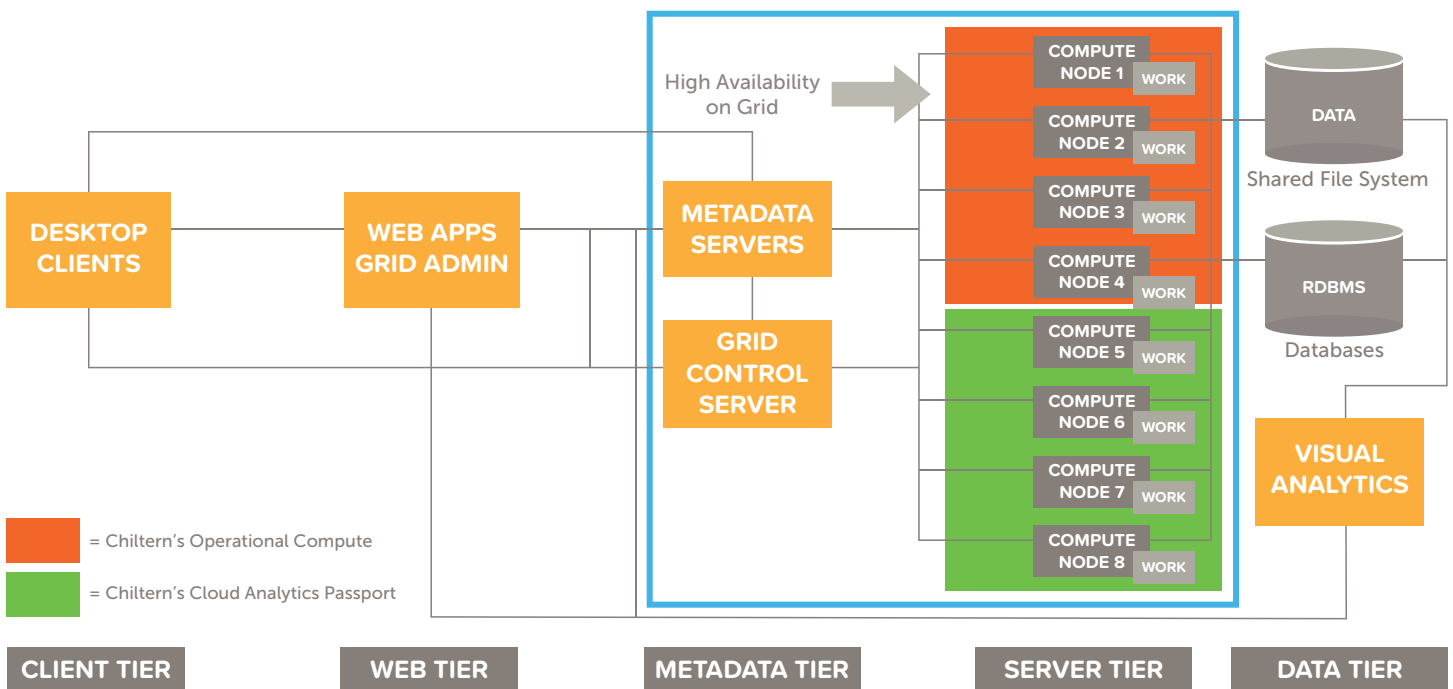


## CHILTERN'S COLLABORATIVE APPROACH

The Cloud Analytics Passport utilizes Chiltern's Connect Methodology and Collaborative Technologies, giving start-to-finish flexibility and arming you with the automation and analytical tools to visualize data and make decisions. Gain access to Chiltern's expertise, including:

DSMB SERVICES • VISUAL ANALYTIC SERVICES • CDISC CONSULTING • FUNCTIONAL SERVICE PROVISIONS

## CHILTERN GRID | SAS GRID ARCHITECTURE DESIGN — PRODUCTION



## MEET OUR THOUGHT LEADER

### MARK PENNISTON

Executive Vice President, Clinical Analytics, and General Manager

As head of Chiltern's Clinical Analytics, Mark Penniston leads a team of global professionals creating clinical data analytics, data management, biometrics, statistical programming and CDISC solutions.